



**EXPRESS**  
SLIP-TORQUE CONVEYOR

PrH  
PRODUCT  
HANDLING

> Packaging Equipment Infeed and Discharge Applications

For over 40 years, Shuttleworth's innovative Slip-Torque® technology has provided transportation and accumulation with minimal line pressure and prevents product jamming, scuffing, or shingling.

Express allows Shuttleworth® to offer their proven Slip-Torque conveyor at a substantially lower price. All Express conveyors are chain driven and manufactured from standard designs and stocked components. Special engineering and/or fabrication are not required.

Available in 14 common widths and 11 lengths, Express will accommodate many industry applications.

**FEATURES AND BENEFITS**

- Slip-Torque surface provides low back-pressure and low friction protecting integrated packaging machinery from over feeding while jamming, scuffing, abrasion and other product damage is avoided.
- Standard design and manufacturing enables shorter lead times for orders.
- Extruded aluminum frame and heavy-duty painted cold-rolled steel tube legs provide a sturdy, durable and dependable construction design.
- Variety of lengths and widths available.
- End stop, guides and drive options are available.

## CONSTRUCTION

- **Frame:** Extruded aluminum frame
- **Surface:** Slip-Torque, individually segmented slip fit rollers
- **Support:** Heavy-duty painted, cold-rolled steel tube legs. All fabricated cold-rolled steel components are coated with a black, epoxy/polyester hybrid powder coating.
- **Motor:** Inverter rated fixed speed multi-voltage motor (208-230/460V, 3-PH, 60Hz). Mounted and unwired.

## KEY SPECIFICATIONS

- **Weight Limit:** 6 lbs per roller shaft
- **Operating Speeds:** Up to 130 feet per minute

## OPTIONS

- **Guides:** Fixed position or quick-adjust, stainless steel guide-rail with a plastic insert or two inch stainless steel sheet guides
- **Product Stop:** One inch fixed end stop
- **Drive:** Variable frequency drive controller for manual conveyor speed adjustment. Available in (120V, 1-PH, 60Hz) or (230V, 1-PH, 60Hz) input power. The drive is mounted and wired.

## VALUE

Express units offer a substantial savings and shorter lead time over custom designed systems for an application. Each unit is fully assembled, tested and inspected prior to shipping.

Shuttleworth also offers an additional discount for purchases of three or more units. Contact a Shuttleworth representative for more information regarding Express discounts

Express units also come with a One-Year Warranty on ALL conveyor components.

## IMPORTANT

**Product conveyability and application is the responsibility of the purchaser.**

## EXPRESS MAY BE PURCHASED IN ANY OF THE FOLLOWING CONFIGURATIONS

### ROLLER SHAFT PITCH

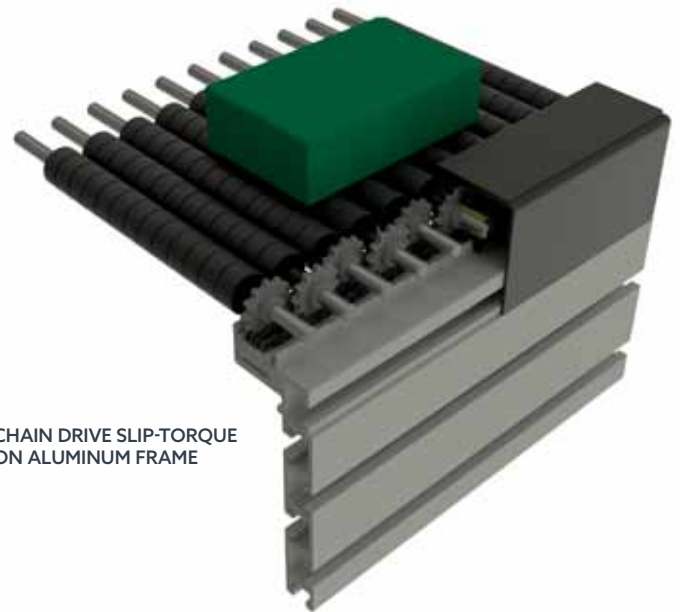
22mm (.895")

### CONVEYING SURFACE WIDTH

110 (120 mm (4.7"))	590 (596 mm (23.5"))
180 (188 mm (7.4"))	650 (664 mm (26.1"))
250 (256 mm (10.1"))	730 (732 mm (28.8"))
310 (324 mm (12.7"))	790 (800 mm (31.5"))
380 (392 mm (15.4"))	860 (868 mm (32.1"))
450 (460 mm (18.1"))	930 (936 mm (36.8"))
520 (528 mm (20.8"))	1000 (1004 mm (39.5"))

### LENGTH

1000 mm (3'-3.3")	3500 mm (11'-5.7")
1500 mm (4'-11")	4000 mm (13'-1.5")
2000 mm (6'-6.7")	4500 mm (14'-9.1")
2500 mm (8'-2.4")	5000 mm (16'-4.9")
3000 mm (9'-10.1")	5500 mm (18'-0.5")
6000 mm (19'-8.2")	



CHAIN DRIVE SLIP-TORQUE ON ALUMINUM FRAME